



Spring term 2025 in Monkey Puzzle class, Years 3 and 4.

Dear Parents,

I hope you had a pleasant Christmas and New Year.

This Spring term the topic in our class changes to Minibeasts. The children will be learning all sorts of aspects of the topic, plus we will incorporate art, design, music and other subjects.

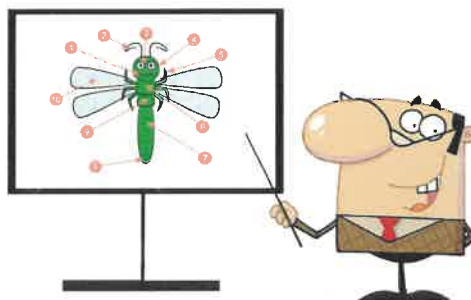
This term our PE day will remain Thursdays, though there will be no swimming. Please ensure your child comes to school wearing the correct school PE kit for these sessions (PE t-shirt – white/blue, black / blue shorts and or a tracksuit and trainers). Please ensure your child can remove their own earrings or they have been removed prior to coming to school that day. School can take no responsibility for lost earrings.

Homework will still be set on Fridays for return by the following Friday. Spellings will be given out on Monday again and tested the following Monday. Please ensure your child reads every day for at least 20 minutes, as this will aid their fluency development. It is also really important that all the children practise their times tables each week.

I hope that covers everything. If you have any queries about anything, please don't hesitate to contact me. Thank you for your continued support.

Yours faithfully

Mr Plumb



What I should already know

There are different types of minibeast and that they live in different habitats.
 What the basic needs for animals and minibeasts to live are.
 To be able to name minibeasts that we might find in our local environment.

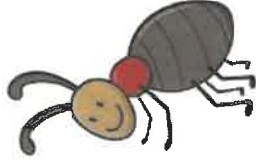
Learning Links

Take Home task – to create a minibeast model



KS1 – Animals and Pets

KS2 – Flowers and Plants



Vocabulary

Habitat	Where a creature lives
Vertebrate	A creature with a backbone
Invertebrate	A creature without a backbone
Lifecycle	The different stages of a creature's life, from birth to death
Metamorphose	To change from one thing to another
Echolocation	To find out the position of things by using echo vibrations
Branch database	A way of sorting information to show the differences between creatures
Minibeast	Any very small creature, such as an insect
Arachnid	Creature such as a spider or scorpion
Carnivore	A creature that eats meat
Herbivore	A creature that eats plants
Omnivore	A creature that eats both meat and plants
Antennae	Feelers
Thorax	The middle part of an insect's body
Abdomen	The rear part of an insect's body

Minibeasts Year A Year 3/4 – Spring term

Knowledge

- Different minibeasts suit different habitats
- Most minibeasts are vertebrates
- Some minibeasts are invertebrates
- Many minibeasts are carnivores
- Minibeasts have lifecycles
- Some minibeasts metamorphose
- Bats detect things using echolocation
- Branch databases can be used to sort minibeasts
- Some minibeasts work as a part of a team
- Minibeasts usually live in communities and families, like humans

Assessment

End of topic assessment
 Wow / Now – school policy
 Self / Peer assessment

Skills

- Work scientifically by observing and finding out about minibeasts
- Use classification keys and data loggers
- Evaluate and analyse creative works using the language of art, craft and design
- Evaluate their ideas and products against their own design criteria and consider the views of others to improve their work
- Improve mastery of techniques – drawing
- Improve mastery of techniques – modelling
- Critique, evaluate their own ideas and others
- Comparing and contrasting different features about the past
- Develop basic skills in cookery – such as chopping, kneading, mixing
- Select, use and combine a variety of software on a range of digital devices to design and create a range of programs
- Use the internet safely

